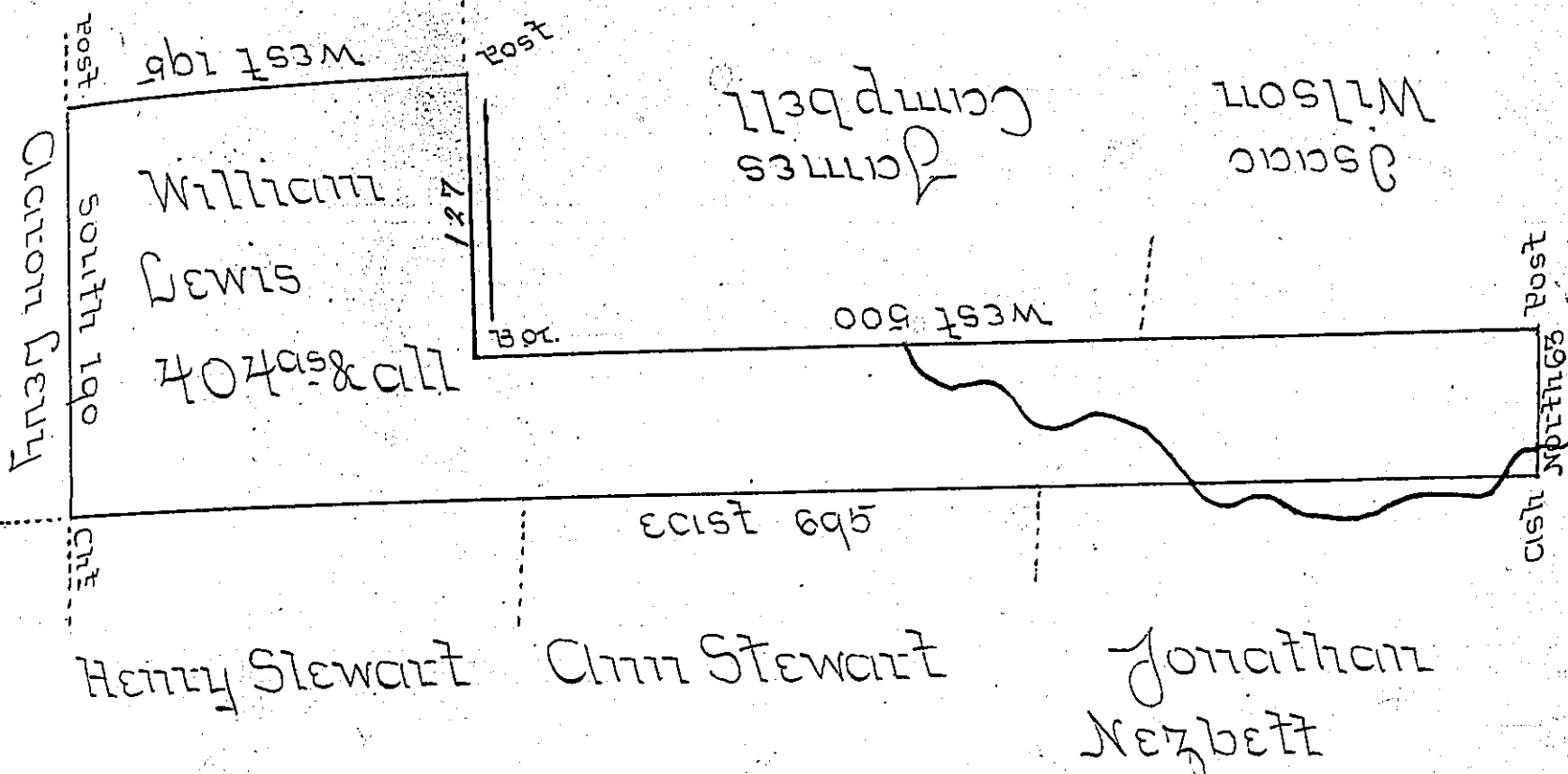


235-60

John Wainwright



Situate on a Small Branch of Clearfield Creek called
 Spruce Run in Huntingdon County containing 404^{as}
 on the Usual Allowance for Roads -
 Surveyed the 17th Day of June 1793 in pursuance
 of a Warrant Dated the 2th Day of July 1792 -

John Canan DS

Daniel Brodhead Esq^r SR

IN TESTIMONY that the above is a copy of the original remaining on file in
 the Department of Internal Affairs of Pennsylvania, made
 conformably to an Act of Assembly approved the 16th day of
 February, 1833, I have hereunto set my Hand and caused
 the Seal of said Department to be affixed at Harrisburg,
 this eleventh day of September 1905.

Isaac P. Brown
 Secretary of Internal Affairs.